

Smart Set-up

Drive Control

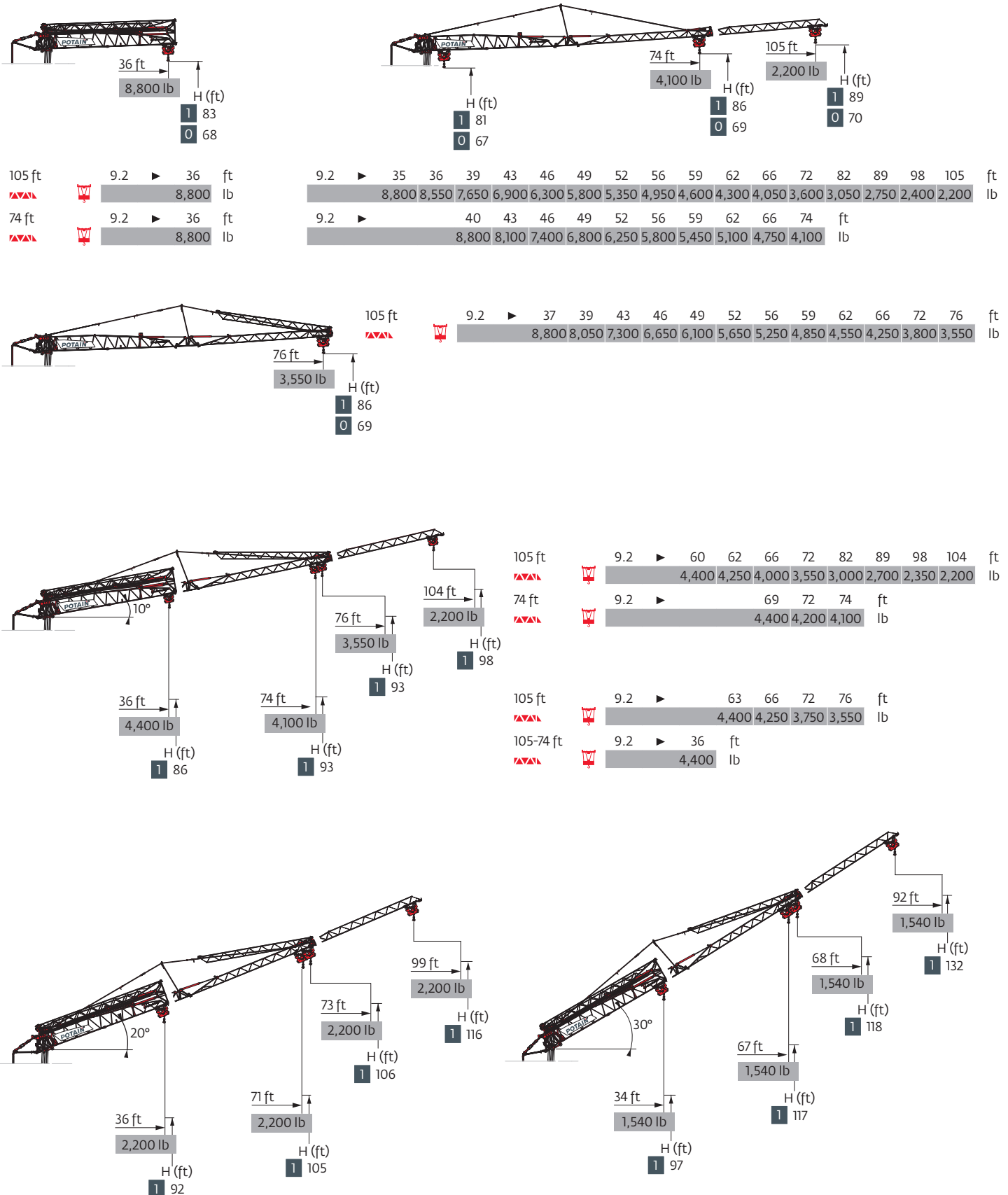
Power Control

CraneSTAR
Diag




Top Site




Top Tracing 3

Load curves



Mechanisms

480 V - 60 Hz			UU					hp	kW
	18 HPL™ 10	fpm	6	62	118	190	213	18	13
		lb	8,800	8,800	4,400	2,200	1,100		
	3 DVF 5	fpm	3 → 148 (0 → 2,200 lb) 3 → 135 (2,200 lb → 8,800 lb)					3	2.2
	HPS 141	rpm	0 → 0.9					5	3.7

 IEC 60204-32	 kVA	
480 V (+6% -10%) 60 Hz	19 → 13 kVA	

Power Requirements

- 480V/60HZ - 56A max
- *480 V phase to phase
- *277 V phase to Ground
- *75A fuse protection
- *WYE connection
- *NO DELTA CONNECTION

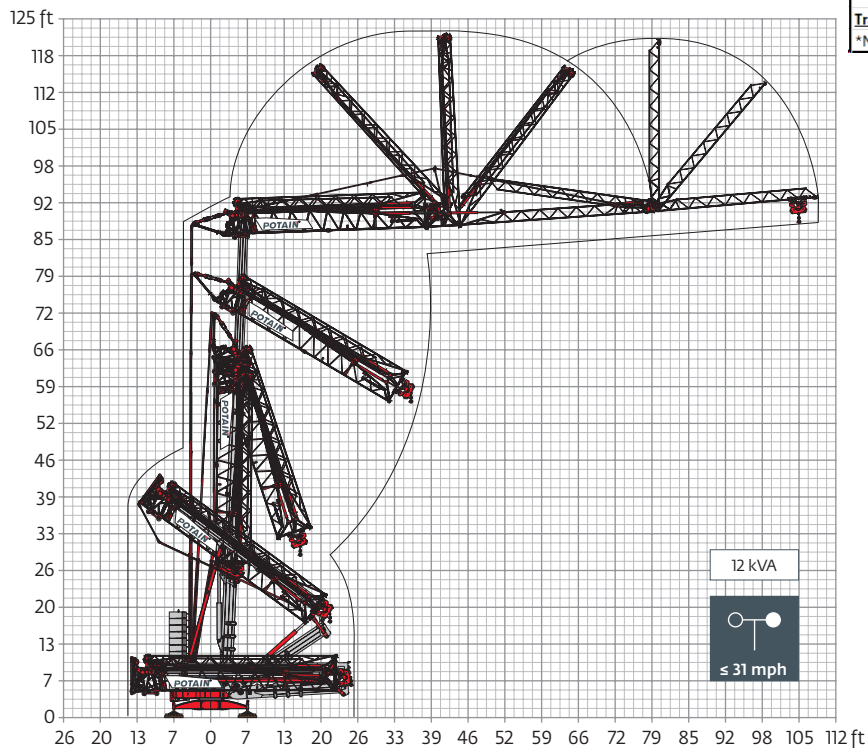
Minimum Generator 45kW

- Supply Cable
- *3 hot + ground
- *No neutral
- *4 AWG wire

Transformer

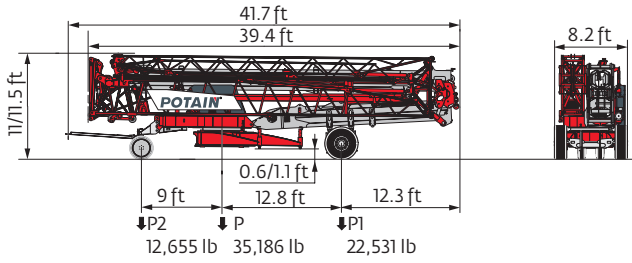
- *No open Delta connection

Erection

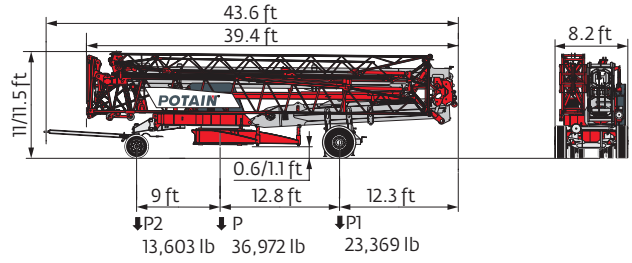


Transport

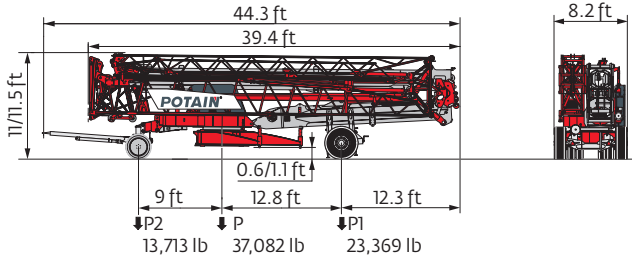
DS62/S120 - 6 mph



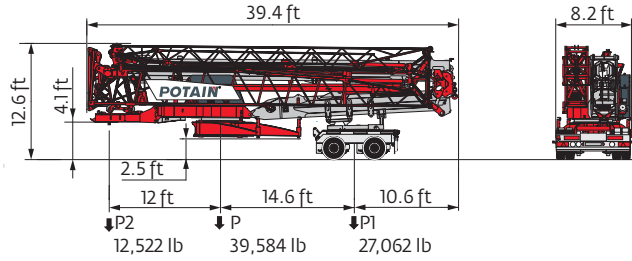
DJ105/S125 - 15.5 mph



DJ126M/S125 - 15.5 mph



North America Highway Axle



Container High Cube 40'



- R Rear slewing radius
- ⓘ Consult us
- Reactions in service
- Reactions out of service
- ⚠ Weight without load, without ballast, without transport axles, with max. jib and standard height
- ⚖ Total ballast weight
- Standard equipment
- ⊞ Options
- ⬆ Hoisting
- ⬆ Trolleying
- ⊙ Slewing
- ⚡ Required power

⊙ Power Control Function: winch speeds adapted to the available power

⚠ This commercial document is not legally binding. For any technical information, please refer to the corresponding instructions.



© 2018 The Manitowoc Company, Inc.
www.manitowoc.com

Form number:16-011/0.85/518